

Automotive

**Choose certainty.  
Add value.**



# Tread Wear & Fuel Consumption Test

## Test Results Of Summer Tires 195/65 R15 91H

# Tread Wear & Fuel Consumption Test

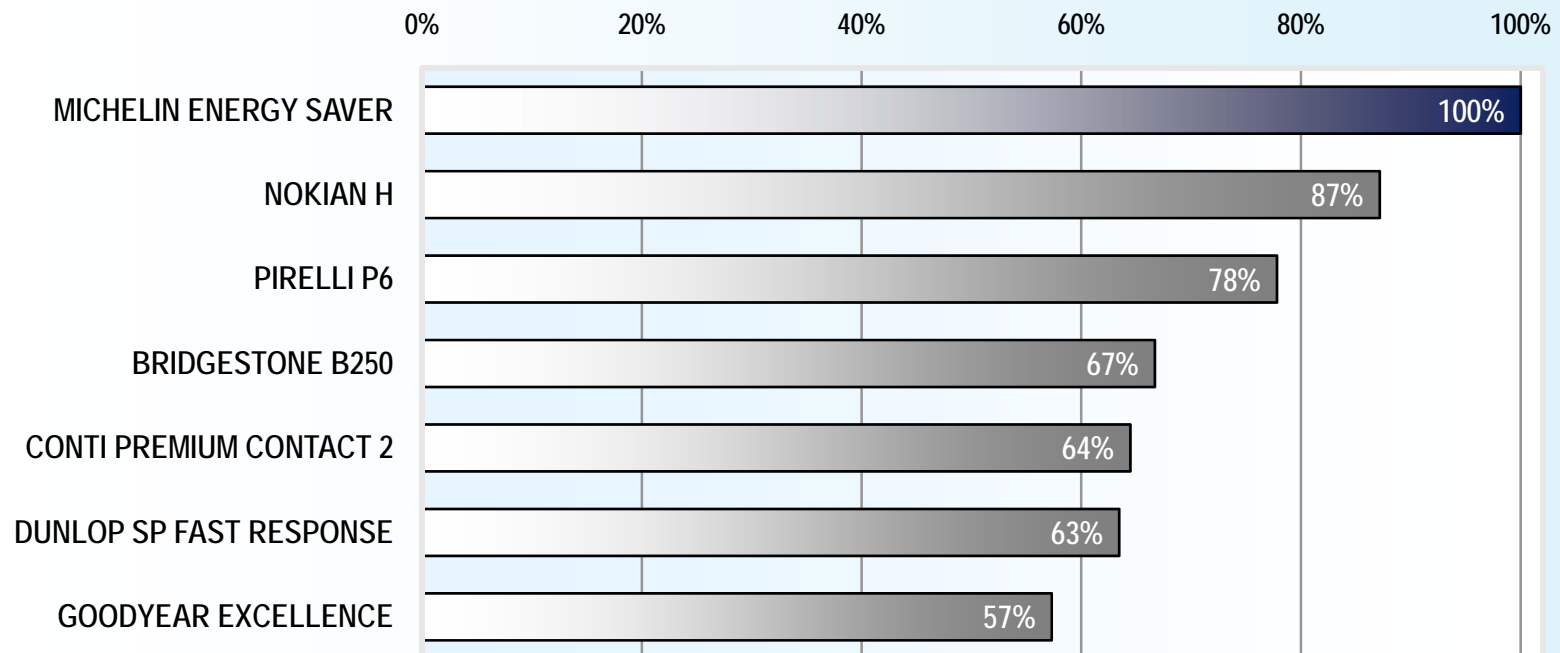


Automotive

## Test results

### 195/65 R15 H: Lifetime

Extrapolation of lifetime (after test mileage of 14 000 km)  
based on  $\emptyset$  of most worn groove of left and right tire on most worn axle



# Tread Wear & Fuel Consumption Test

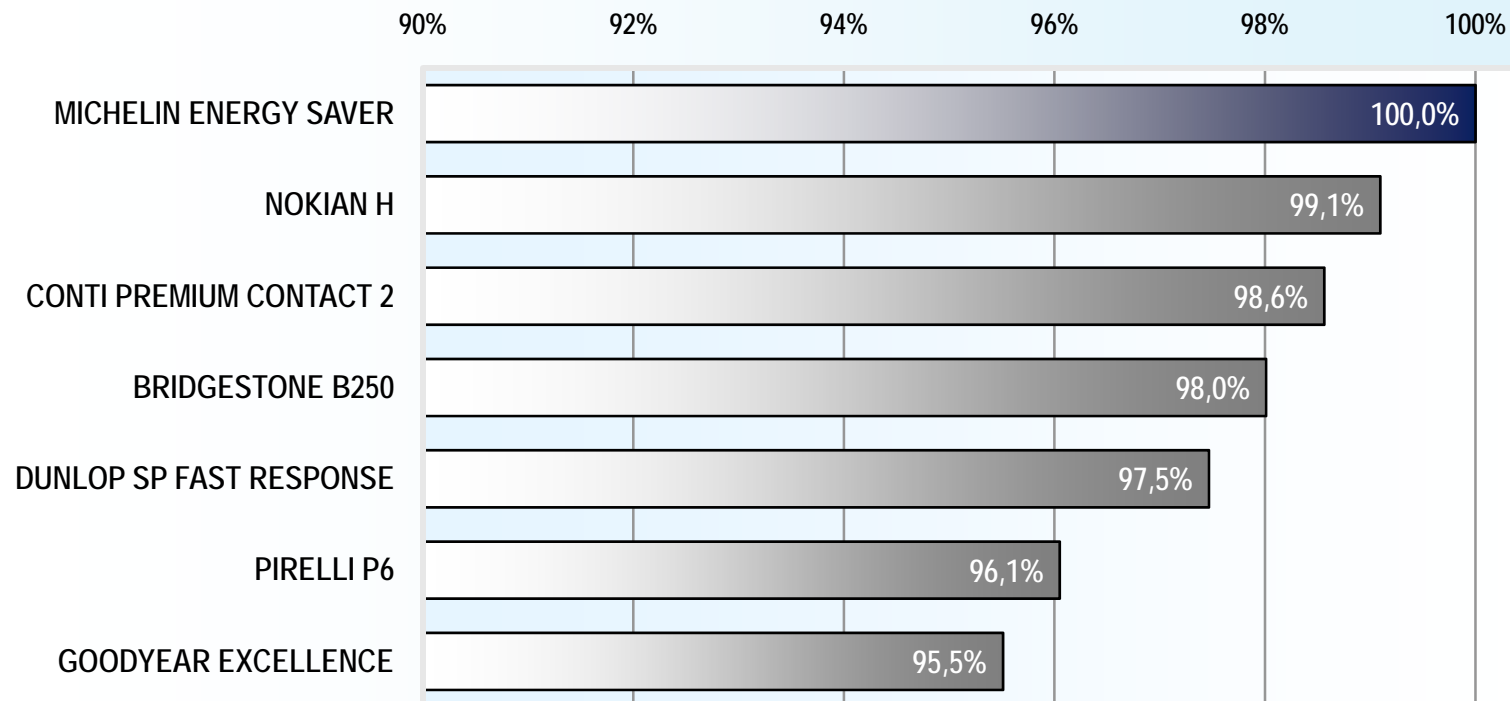


Automotive

## Test results

### 195/65 R15 H: Fuel Economy

#### FUEL ECONOMY [%]



# Tread Wear & Fuel Consumption Test

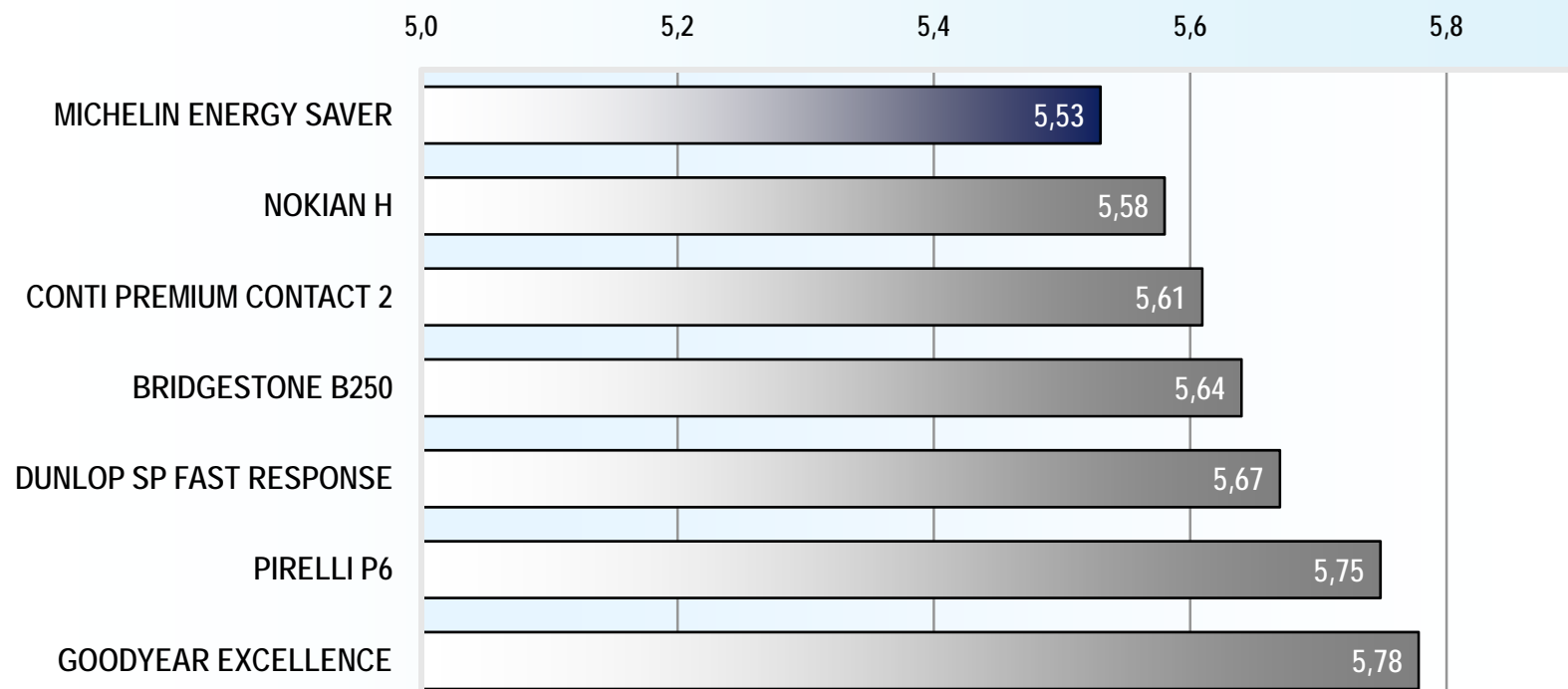


Automotive

## Test results

### 195/65 R15 H: Fuel Consumption

#### FUEL CONSUMPTION (l/100 km)



# Tread Wear & Fuel Consumption Test



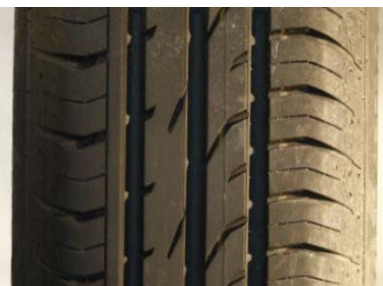
Automotive

## Test tires

### Summer tires 195/65 R 15 H



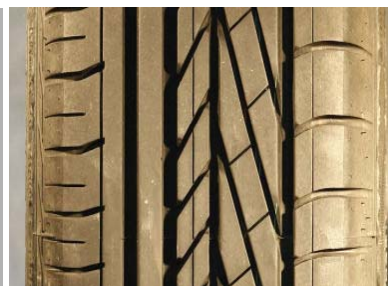
**Bridgestone B 250**



**Conti Premium Contact 2**



**Dunlop SP Fast Response**



**Goodyear Excellence**



**Michelin Energy Saver**



**Nokian H**



**Pirelli P6**



## Test method

### Key Points Tread Wear Test / Lifetime

- Results show % evaluation in comparison to the best performance of one tire, the best tire represents 100%
- Relative performance: value below 100 % = worse  
Performance compared to the best performance of one brand in the test
- Results of tread wear tests (expected lifetime) are subject to linear extrapolation
- Evaluation based on the front (driven) axle results
- All tires are purchased on the open market by TÜV SÜD

## Test vehicles

### Skoda Octavia

The on-road tests of tread wear were performed with the test vehicles specified as follows:



<b>Body</b>	5-door saloon	<b>Drive concept</b>	front
<b>Engine type</b>	4 cyl. 1.9 l turbo diesel	<b>Max. Engine torque</b>	250 Nm / 1900 min <sup>-1</sup>
<b>Max. Engine power</b>	77 kW at 4000 min <sup>-1</sup>	<b>Gearbox</b>	5-speed manual transmission
<b>Max. Speed</b>	192 km/h	<b>Test weight</b>	1500 kg



## Test method

### Key Points Fuel Consumption Test

- Results show absolute values of fuel consumption / 100 km
- Results are averaged over the complete test mileage of 14 000 km
- Results are based on board computer readings and refueling records